



KONICA MINOLTA

MAMMOGRAPHY FILM  
*NEW* **CM-H**



M · A · M · M · O · G · R · A · P · H · Y



The essentials of imaging

# MAMMOGRAPHY FILM <sup>NEW</sup>CM-H

**Produces images of high-quality and sharp detail over a wide density range. Will not miss even minute details for diagnosis.**

Konica Minolta Type <sup>NEW</sup>CM-H is a very high contrast, high speed, single emulsion orthochromatic film designed specifically for mammography. <sup>NEW</sup>CM-H film is optimized with the use of Konica Minolta mammography screens or similar screens specially developed for mammographic imaging.

Type <sup>NEW</sup>CM-H has been formulated to produce excellent diagnostic results at the standard 90-second processing cycle as well as with extended processing cycle times.

### Processing

To provide for maximum developer activity, Type <sup>NEW</sup>CM-H should be processed emulsion side down. Konica Minolta's mammography film can be processed in any 90 second cycle at 35°C or it can benefit from extended development time.

### Safelight Recommendations

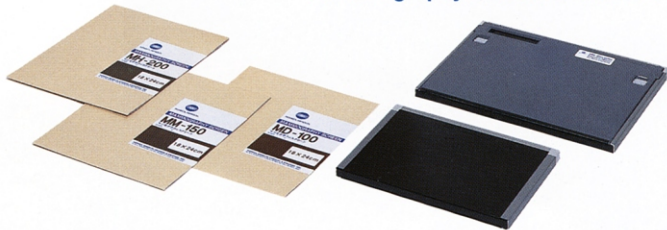
Type <sup>NEW</sup>CM-H film may be used with a red or dark red safelight filter. Safelights should not exceed a 15 watt bulb at a working distance of at least 1.2 m.

### Handling/Storage

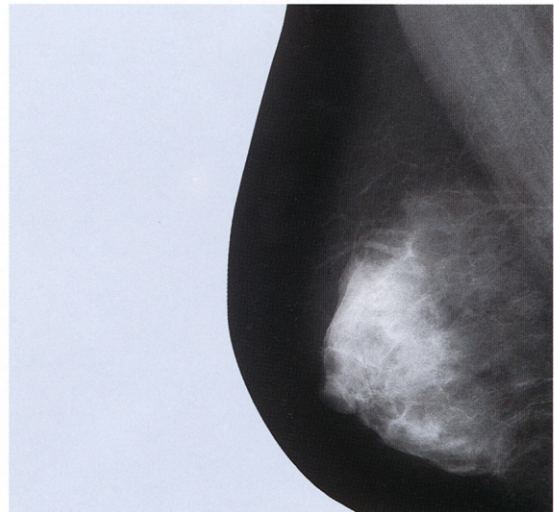
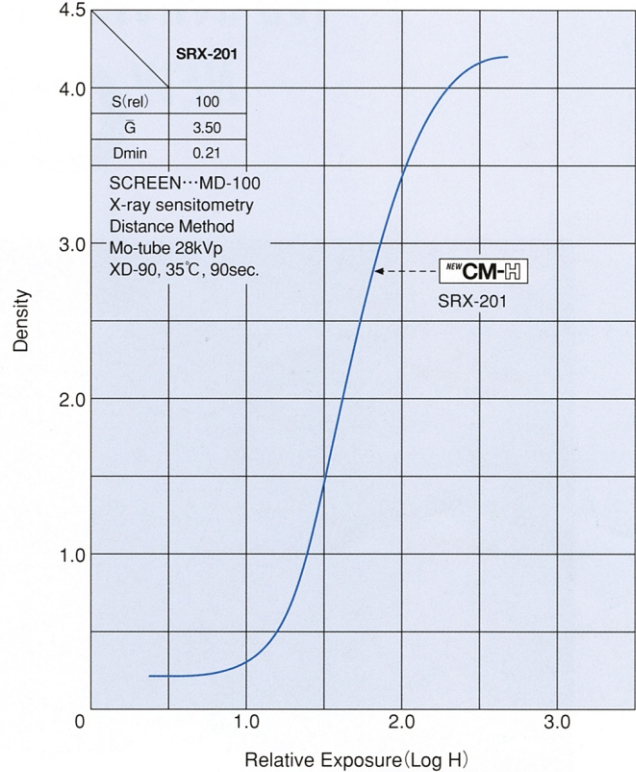
Type <sup>NEW</sup>CM-H, like all radiographic films, should be handled carefully to avoid artifacts. Also, like all Konica Minolta film, Type <sup>NEW</sup>CM-H should be stored in a cool (10°-25°C) and dry (40-60% relative humidity) area. Boxes should be located off the floor in a vertical position. The storage area should never be subjected to chemical fumes, dust, radiation or radioactive materials. It is suggested to routinely rotate film inventory to avoid film from becoming outdated.

\*Specifications are subject to change without notice.

### Mammography Cassette&Screen



Characteristic curve of <sup>NEW</sup>CM-H



Konica Minolta medical film is manufactured with a quality control system that has been certified to be in compliance with the ISO 9001:2000, and JIS Q9901 quality control standards, as well as with the medical device directive MDD93/42/EEC.



KONICA MINOLTA

**KONICA MINOLTA MEDICAL & GRAPHIC, INC.**

Shinjuku Nomura Building No.26-2, Nishishinjuku 1-chome, Shinjuku-ku, Tokyo 163-0512, Japan.

Distributed by :